

Rab7(Q67L)

Catalog Number: 10135

Synonyms: Member RAS oncogene family, Rab7a,MGC102153

Introduction: Members of the Rab family of Ras-related GTP-binding proteins are important regulators of vesicular transport and are located in specific intracellular compartments. Rab7 has been localized to late endosomes and shown to be important in the late endocytic pathway. In addition, it has been shown to have a fundamental role in the cellular vacuolation induced by the cytotoxin VacA of *Helicobacter pylori*.

Amino Acid Sequence: (1-207, Q67L)

MTSRKKVLLKVILGDSGVGKTSMLNQYVNKKFS
NQYKATIGADFLTKEVMVDDRLVTMQIWDTAGL
ERFQSLGVAFYRGADCCVLVFDVTAPNTFKTLDS
WRDEFLIQASRPDPENFPFVVLGNKIDLENRQVA
TKRAQAWCYSKNNIPYFETSAKEAINVEQAFQTI
ARNALKQETEVELYNEFPEPIKLDKNDRAKASA
ESCSC

Source: Human, recombinant full length, His6-tag

Expression Host: E. coli

Molecular Weight: 23 kDa

Purity: >99% by SDS-PAGE

Constituents: 20mM Tris-HCl, pH8.0, 150mM NaCl.

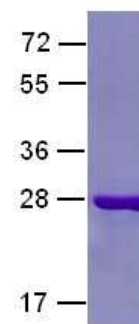
Physical Appearance: White or clear

Concentration: 1 mg/mL

Storage: -80°C

Preparation Instructions

Adding of 10 mM β -mercaptoethanol or 1 mM DTT into the solution to protect the protein is recommended and using of non-ionic detergents such as n-Dodecyl β -D-maltoside (DoDM) or polyethylene detergents (e.g. C₁₂E₁₀) also help to stabilize the protein. Avoid repeated freezing and thawing.



The purity of His-tagged Rab7(Q67L) was determined by SDS-PAGE and Coomassie Brilliant Blue Staining.

References

1. Edinger, A. L. et al., *Dev. Cell* 5: 571-582, 2003.
2. Houlden, H. et al., *Ann. Neurol.* 56: 586-590, 2004.
3. Meggouh, F. et al., *Neurology* 67: 1476-1478, 2006.
4. Rak, A. et al., *Cell* 117: 749-760, 2004.
5. Verhoeven, K. et al., *Am. J. Hum. Genet.* 72: 722-727, 2003.

FOR RESEARCH USE ONLY. NOT FOR DIAGNOSTIC APPLICATIONS